

# INSTRUMENT APPROACH CHART

**AERODROME ELEV 304'**  
 HEIGHTS RELATED TO  
 THR RWY 24 - ELEV 301'

RADAR APP 125.75  
 TWR 118.45  
 GND 121.65  
 ATIS 127.00

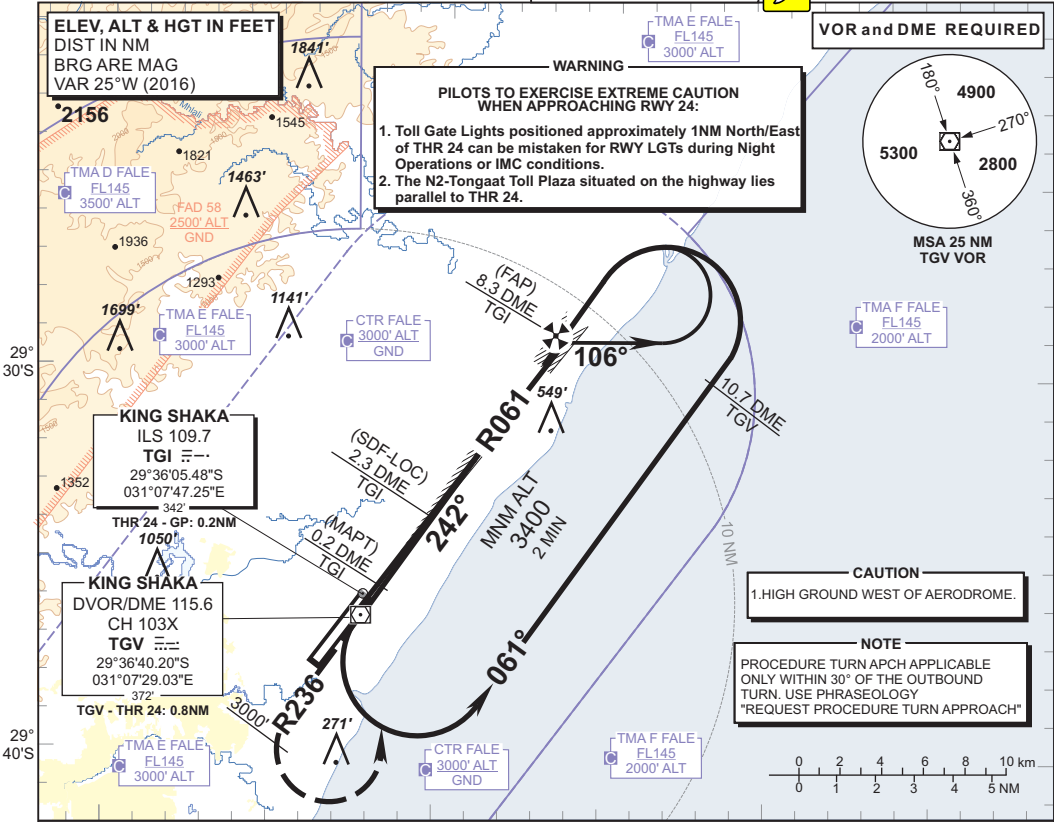
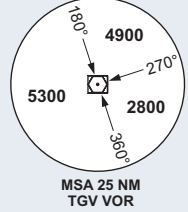
**DURBAN**  
 (KING SHAKA INTERNATIONAL)  
**ILS Y RWY 24 CAT II**  
 CAT A - D



**ELEV, ALT & HGT IN FEET**  
 DIST IN NM  
 BRG ARE MAG  
 VAR 25°W (2016)

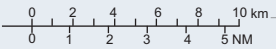
**WARNING**  
**PILOTS TO EXERCISE EXTREME CAUTION**  
**WHEN APPROACHING RWY 24:**  
 1. Toll Gate Lights positioned approximately 1NM North/East of THR 24 can be mistaken for RWY LGTs during Night Operations or IMC conditions.  
 2. The N2-Tongaat Toll Plaza situated on the highway lies parallel to THR 24.

**VOR and DME REQUIRED**



**CAUTION**  
 1. HIGH GROUND WEST OF AERODROME.

**NOTE**  
 PROCEDURE TURN APCH APPLICABLE ONLY WITHIN 30° OF THE OUTBOUND TURN. USE PHRASEOLOGY "REQUEST PROCEDURE TURN APPROACH"

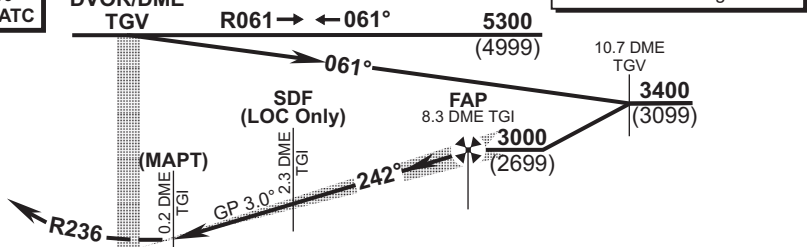


TGI ILS/DME	8.3	8	7	6	5	4	3	2.3	2	1
ADVISORY ALT (HGT)	3000 (2699)	2910 (2609)	2580 (2279)	2250 (1949)	1930 (1629)	1600 (1299)	1280 (979)	1050 (749)	950 (649)	620 (319)

**TRANSITION ALT 5500**  
**TRANSITION LEVEL ATC**

**INA ALT: 3400 or higher MSA**

**MISSED APPROACH:**  
 Climb straight ahead on R236 TGV to 3000 ALT.  
 At 3000' ALT, turn left direct TGV, climbing to 3400' ALT.



**ILS RDH 54**  
**THR ELEV 301**  
 NM to/from THR RWY 24

OCA (H)		A	B	C	D/DL	GS	KT	80	100	120	140	160	
Straight-in Approach	With 2.5% Missed APCH Gradient	CAT I	1188 (887)	1188 (887)	1188 (887)	1194 (893)	FAP to THR	M:S	6:05	4:52	4:03	3:29	3:02
	CAT II	1088 (787)	1094 (793)	1103 (802)	1122 (821)	Rate of descent	FPM	435	544	652	761	870	
		GP INOP	1420 (1133)	1420 (1133)	1420 (1133)								1420 (1133)
	With 3.4% Missed APCH Gradient	CAT I	501 (200)	501 (200)	501 (200)	507 (206)	<b>NOTE:</b> 1. Descend in the hold to 3400' ALT. 2. 80°/260° Procedure turn prohibited. 3. Circle to land at the discretion of the pilot in command.						
CAT II		401 (100)	407 (106)	416 (115)	435 (134)								
Circling: AD ELEV		1000 (696)	1000 (696)	1270 (966)	1350 (1046)								

CHANGE: OCA(H) Advisory ALT Table/VAR